

St. John Newsletter

A Publication of the St. John Village Trust

Village Website - www.stjohnincornwall.org.uk

July 2021

Editorial



Well - we have moved past the longest day, summer seems to have, finally, started to make an appearance and I wonder if we dare to hope that 'normality' is starting to creep back... There is a report from the St. John walkers who met for the first time since John McCullough lead the walk to Cotehele on March 9th 2020. This month they set off from Bere Alston on a Tuesday morning as they are changing their regular day to ensure that more pubs will be open - it's all about priorities!! We have the usual Village Hall project update from Chris. It is going well although, unfortunately, 'shortages' are delaying the final stages.

There is information about the Church services and '100 club' winners and Kath's regular nature report. This month features lovely photos of butterflies and bees (courtesy of Lynne) and, of course, a strange growth for you to identify! Page 4 features news of Panache Gallery which is relocating to Antony and, on the last page, Alison (who is becoming our 'resident' poet...) has chosen two items for us this month - not sure about the 'Moons', but I go with the quite sedate pace one!

The picture 'filler' is a pleasant summer evening on the river Tamar - taken while fishing... Have fun and enjoy yourselves. It's summer!! Catch up next time.

Dave

St John Walkers

St John Walkers are back!

It was really great to restart after such a long time. Sue was unable to lead the walk as she has an injury to her arm, so it was delegated to me. Nine of us turned out, to set off from Bere Alston station down to the Tamar, where we walked along a superb river path with lovely views opposite Calstock and Cothele. The walk was 3.5 miles, mostly flat and not too challenging, and the weather was warm and very sunny. We were very happy to finish the walk and drive down to Milton Coombe where we had a welcome lunch and a few beers at the "Who'd Have Thought It". Whilst we had tables booked inside, we preferred to sit in the sunshine at an outside table (helpful as Bess had enjoyed herself rolling in some doubtful foxy material). Thanks to Ralph, Eileen, Howard, Viv, Paul, Val, Martyn and Sue H for helping me walk Bess that day, and especially Paul who provided an improvised dog lead!

We hope to continue walking on the second Tuesday of each month, and if you are interested in trying a walk then please contact Sue (sueclarerichards@me.com).

Howard and Viv will be leading the July walk, and regulars will receive information from Sue by e mail.

Del.



St John Village Hall - Building Project 2021



The St John Village Hall building project continues to progress, but the latest delay is the arrival on-site of the remaining windows. However, the Annexe's windows and doors have arrived and are looking great, and the external cladding is complete. Internally steady progress is ongoing with the toilets, kitchen and store-room, and the electrical and plumbing aspects are nearing completion.



All this means that although we are approaching the final stages I do not expect the formal handover before the middle of next month (July), but in all probability we should be up and running in time for the 19th July deadline, or soon afterwards. Let's hope so...

Chris Morris.

St John Church

July services in St. John's Church.

Sunday 4th July Morning Worship .

Sunday 11th July Holy Communion .

Sunday 18th July Morning Worship.

Sunday 25th July Holy Communion .

All services commence at 9.30.

Many Thanks

Susan



The 100 club winners for this month

Sue Huke£20

David Turner£5

Jonet Waldock£5

This week the numbers were chosen by a cashier in the Post Office.!

Ray.



The high light of this month's bird watching calendar must be the Egyptian Vulture that was spotted on Scilly, the first sighting for 153 years in the UK. This bird is the smallest of Europe's 4 species of vulture and considered to be the most endangered. It feeds primarily on carrion and is known to use tools to crack eggs.

The two lovely butterfly images Lynne has sent in, are similar in colouration but different species. One is the most widespread of the UK Fritillaries, a male specimen of the Dark Green Fritillary. The other with sculptured wings is the Comma, so called because it has a comma on the underside of its wings. Unusually the Comma is expanding its range after its dramatic decline in the 1960's. Its current success is due to a change in larval food plant from hops to nettles.

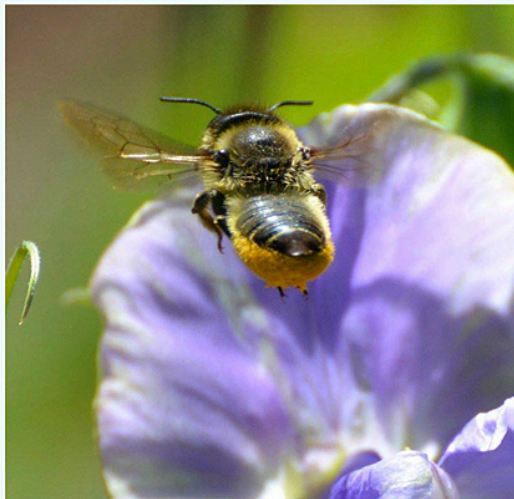
Also interestingly, an Alpine Swift was spotted between Trevol and St John's lake on June 23rd in a feeding flock of over 400 Swifts.



Fritillary



Comma



Leafcutter bee

Also courtesy of Lynne is the Leaf Cutter Bee. The female of this species cuts circular holes in leaves, being particularly partial to roses, which she glues with her saliva to form nests for the larvae, located in cavities and often enjoying "bee hotels". 150 of these little bees can pollinate the same number of flowers as 3,000 honey bees. They have been known to be specifically "employed" in Blueberry growing Farms.

To identify these bees you need to look for the "pollen brush" on the underside of their abdomens, other bee species tend to collect pollen on their hind legs.



This shot is of a strange "growth" on currant bushes. Any ideas fruit growers of St John?

Kath Overton.

PANACHE GALLERY AND RAME FRAMING

Have you heard the news?

After almost 12 years running our lovely 'Panache' art gallery and gift shop in Kingsand, we are delighted to be relocating to join our family picture framing business in Antony village.

Although officially relocating in September, we have already added a lot of new items for sale in the Antony shop – you may have noticed our signs popping up and frantic painting!



Whilst continuing to exhibit and sell work by our long-standing artists we will be expanding to include more fabulous art, cards, jewellery and gifts and will be the area stockist for the traditional blue and white, striped “Cornishware”

In addition to all this we are excited to be offering local produce for sale, including bread, eggs, milk and Cornish pasties (hot or cold) all sourced within the Rame Peninsula and Cornwall. We are also a stockist for Cornish tea and coffee.



Simply call us or 'pop in' to see what we have on offer and discuss your requirements. We will be happy to arrange a regular order if you wish.

Panache Gallery and Rame Framing are located at:

Island House

Antony

PL11 3AB (near The Carew Arms)

Tel. 07954 002441

Opening hours:

Monday to Friday 10.00am - 5.00pm

Saturdays 10.00am – 1.00pm

(We can open outside these hours by arrangement.)

We look forward to welcoming you.

Kind Regards

Jan and Mike Ferguson



Walking Pace

If feet could go as fast as wheels, a pity it would be ----
because you'd move so quickly that you'd never really see ---
the wild rose by the wayside and the cloudscapes in the sky.
All the things that go unnoticed when you're rushing by.

Butterflies and dragonflies and shadows cast by trees...
Snowy flakes of falling blossom drifting on the breeze.
Bees with golden pollen flecked... the flashing of a wing.
Thistledown and gossamer and rushes quivering.

Ducks on ponds and little creatures by the road's green edge.
Bead eyes peeping shyly from the shelter of the hedge.
Raindrops glistening diamond-bright on stalk and leaf and flower....
What a lot we miss when we exceed four miles an hour!

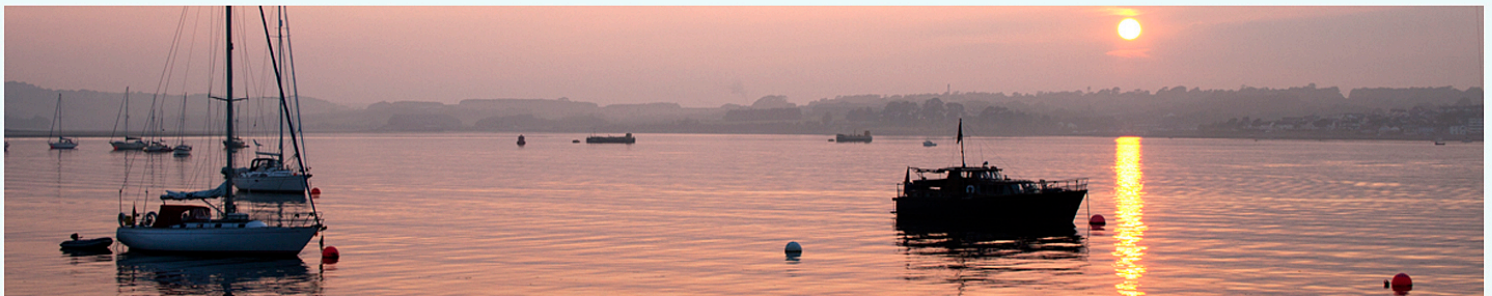
Patience Strong

Full Moons

For hundreds of years people observed the passing
of months and seasons by the changing phases of
the moon. Every 29 days we have a full moon – one
a month or “moonth”

There are some names which attached themselves
especially in the northern hemisphere:-

January	wolf
February	snow or ice
March	worm or storm
April	pink or crowing
May	flower or hare
June	strawberry or mead – this last being a “super” moon – in appearing bigger and closer to us than normal



and finally.....

People who say they don't care what people think are usually desperate to have people
think they don't care what people think...